



EK-P001	EK-P002	EK-P003	EK-P004
楼梯固定扣件	冲压扇贝扣件	90度管夹扣件	木板夹
Board Retaining Coupler	Pressed Oyster Coupler	Finial Coupler	Board Retaining Coupler
48.3mm 0.59kg	48.3mm 0.56kg	48.3mm 0.80kg	48.3mm 0.56kg



EK-P005	EK-P006	EK-P007	EK-P008
英式冲压旋转扣件	英式冲压直角扣件	日式冲压旋转扣件	日式型冲压直角扣件
British Type Pressed Swivel Coupler	British Type Pressed Double Coupler	Pressed Swivel Coupler	Pressed Double Coupler
48.3mm 1.00kg	48.3mm 0.86kg	48.3mm 0.55kg	48.3mm 0.55kg



EK-P009	EK-P010	EK-P011	EK-P012
轻型悬梁扣件	猪耳扣件	冲压木板扣件	冲压可调内接
Light Duty Girder Coupler	Pressed Putlog Coupler	Board Retaining Coupler	Pressed Inner Joint Pin
48.3mm 0.98kg	48.3mm 0.63kg	48.3mm 0.64kg	40mm 0.56kg



EK-P013	EK-P014	EK-P015	EK-P016
冲压可调内接	栅栏扣件	固梯扣件	冲压彩钢瓦扣件
Pressed Inner Joint Pin	Fencing Coupler	Pressed Ladder Clamp	Roof Coupler
40mm 0.78kg	0.38kg	48.3mm 1.52kg	48.3mm 1.28kg



EK-P017
冲压木板扣件
Board Retaining Coupler
48.3mm 0.62kg



EK-P018
意式冲压旋转扣件
Italian Type Pressed
Swivel Coupler
48.3mm 1.54kg



EK-P019
意式冲压直角扣件
Italian Type Pressed
Double Coupler
48.3mm 1.35kg



EK-P020
木板卡扣
ToeBoard Clip
0.32kg



EK-P021
夹子
Clamp
0.52kg



EK-P022
踏板夹子
Toe End Clip
0.47kg



EK-P023
踏板夹子
Toe End Clip
0.38kg



EK-P024
梯子夹
Ladder Clamp
0.50kg



EK-P024
模板卡扣
Panel Clip
0.50kg



EK-P025
外接
Sleeve Coupler
48.3mm 1.30kg



EK-P026
外接
Sleeve Coupler
48.3mm 1.00kg



EK-F001
意式玛钢直角扣件
Italian Type Malleable Iron
Double Coupler
48.3mm 1.50kg



EK-F002
意式玛钢旋转扣件
Italian Type Malleable Iron
swivel Coupler
48.3mm 1.90kg



EK-F003
意式锻压旋转扣件
Italian Type Forged
swivel Coupler
48.3mm 1.70kg



EK-F004
意式锻压轻型直角扣件
Italian Type Forged
Double Coupler
48.3mm 1.30kg



EK-F005
意式锻压重型直角扣件
Italian Type Forged Heavy
Duty Double Coupler
48.3mm 1.80kg



EK-F006

意式锻压外接扣件

Italian Type Forged

Sleevel Coupler

48.3mm 1.65kg

EK-F007

意式锻压一半扣件

Italian Type Forged

Half Coupler

48.3mm 0.65kg

EK-F008

顶板扣件

Beam Coupler

0.50kg

EK-F009

锻压内管接

Forged Joint Pin

48.3mm 1.00kg



EK-F010

重型锻压旋转悬梁

Forged Swivel Girder Coupler

48.3mm 0.65kg

EK-F011

焊接悬梁扣件

Fixed Girder Coupler

48.3mm 1.47kg

EK-F012

轻型锻压旋转悬梁扣件

Light Duty

Swivel Girder Coupler

48.3mm 1.50kg

EK-F013

英式直角扣件

British Type Double Coupler

48.3mm 1.05kg



EK-F014

英式直角扣件

British Type Double Coupler

48.3mm 1.00kg

EK-F015

英式旋转扣件

British Type Swivel Coupler

48.3mm 1.20kg

EK-F016

美式直角扣件

American Type Double Coupler

48.3mm 1.00kg

EK-F019

美式旋转扣件

American Type Swivel Coupler

48.3mm 1.20kg



EK-F017

美式重型直角扣件

American Type Heavy Duty

Double Coupler

48.3mm 1.60kg

EK-F018

美式防滑杠旋转扣件

American Type Heavy Duty

Swivel Coupler

48.3mm 1.70kg

EK-F020

美式防滑杠直角扣件

American Type Heavy Duty

Double Coupler

51mm 1.80kg



EK-F021	EK-F022	EK-F023	EK-F024
德式防滑直角扣件	德式防滑旋转扣件	澳式直角扣件	澳式旋转扣件
German Type Double Coupler	German Type Swivel Coupler	Australian Type Double Coupler	Australian Type Swivel Coupler
48.3mm 1.20kg	48.3mm 1.40kg	48.3mm 1.02kg	48.3mm 1.11kg



EK-F025	EK-F026	EK-F027	EK-F028
直角扣件	旋转扣件	直角扣件	旋转扣件
Double Coupler	Swivel Coupler	Double Coupler	Swivel Coupler
73X48.3mm 2.20kg	73X48.3mm 2.40kg	60X48.3mm 2.06kg 63X48.3mm 2.4kg	60X48.3mm 2.20kg 63X48.3mm 2.5kg



EK-F029	EK-F030	EK-F031	EK-F032
旋转扣件	直角扣件	旋转一半扣件	直角扣件
Swivel Coupler	Double Coupler	Half Swivel Coupler	Double Coupler
89X42mm 2.95kg 89X48mm 3.10kg	89X48.3mm 2.70kg	89mm 2.30kg	48.3X42mm 0.96kg



EK-F033	EK-F034	EK-F035	EK-F036
旋转扣件	锻压木板扣	猪耳扣件	意式锻压一半扣件
Swivel Coupler	Board Retaining Coupler	Pressed Putlog Coupler	British Type Swivel Coupler
76X48.3mm 1.60kg	48.3mm 0.65kg	48.3mm 0.73kg	48.3mm 1.20kg



EK-F037

EK-F038

EK-F039

EK-F040

锻压外接扣件

双管扣件

重型双管扣件

U型扣件

Forged Swivel Coupler

Side-By-Side Coupler

Heavy duty Side-By-Side Coupler

U Head Coupler

48.3mm 1.66kg

42mm 0.71kg

48.3X42mm 0.75kg

48.3mm 1.17kg



EK-F041

EK-F042

EK-F043

EK-F044

焊接销子扣件

防滑杠焊接内接扣件

角铁焊接扣件

墙锁杆式扣件

Single Coupler With Welded Pin

Coupler With Welded Coupling Pin

Coupler With Welded Angle Iron

Coupler With Hook

48.3mm 0.61kg

48.3mm 1.61kg

48.3mm 1.81kg

48.3mm 0.82kg



EK-F045

EK-F046

EK-F047

EK-F048

焊长板扣件

楔式旋转一半扣件

楔式旋转扣件

焊L棒扣件

Coupler With Welded Plank

Wedge Head Half Coupler

Wedge Head Swivel Coupler

Coupler With Welded L Rod

48.3mm 0.81kg

48.3mm 0.6kg

48.3mm 1.37kg

48.3mm 0.79kg



EK-F049

EK-F050

EK-F051

EK-F052

焊接横杆扣件

焊接吊环扣件

防滑杠焊接铸钢头扣件

焊接铸钢头扣件

Coupler With Welded Tube

Coupler With Welded Ring

Coupler With Welded Cast Steel Wedge

Coupler With Welded Cast Steel Wedge

48.3mm 1.43kg

48.3mm 0.87kg

48.3mm 1.28kg

48.3mm 1.00kg



EK-F053	EK-F054	EK-F055	EK-F056
铸刚头旋转扣件	铸刚头旋转扣件	焊接M20螺栓扣件	异型焊接M16螺栓扣件
Swivel Coupler With Cast Steel Wedge	Swivel Coupler With Cast Steel Wedge	Coupler With Welded Bolt M20	Coupler With Welded Bolt M16
48.3mm 1.16kg	48.3mm 1.16kg	48.3mm 0.65kg	48.3mm 0.81kg



EK-F057	EK-F058	EK-F059	EK-F060
异型焊接M14螺栓扣件	圆盘扣件	防滑杠焊接L板扣件	防滑杠焊接直角板扣件
Coupler With Welded Bolt M14	Round Ring Clamp	Coupler With Welded L-Plank	Coupler With Welded Plate
48.3mm 0.70kg	1.20kg	48.3mm 1.15kg	48.3mm 1.43kg



EK-F061	EK-F062	EK-F063	EK-F064
防滑杠角铁焊接扣件	防滑杠焊接插板式扣件	荷兰锻压直角扣件	荷兰锻压旋转扣件
Coupler With Welded Angle Iron	Single Coupler With Wedge	Holland Type Forged Double Coupler	Holland Type Forged Swivel Coupler
48.3mm 1.44kg	48.3mm 1.04kg	48.3mm 1.67kg	48.3mm 1.48kg



EK-F065	EK-F066	EK-F067
铝合金旋转扣件	铝合金扣件	U型支架扣件
Aluminium Alloy Swivel Coupler	Aluminium Alloy Coupler	Single Coupler With U-Type Bracket
50mm 1.01kg	50mm 0.66g	48.3mm 2.3kg

KWIKSTAGE ADVANTAGES

- *Speed of erection and dismantling.*
- *Very versatile.*
- *Labour saving.*
- *No loose fittings.*
- *Working levels can be changed quickly.*
- *Only four basic components.*
- *Compact for storage and transporting.*
- *Suits material handling systems (pallets).*
- *Can be used on uneven ground.*
- *Minimal maintenance.*
- *Non tilt interlocking steel scaffold planks solves problems previously encountered with wooden planks.*



USES

- SCAFFOLDING
- FLAT SLAB SUPPORT
- COFFERED FLOORS
- TOWERS / MOBILES
- SEATING STANDS
- STAGES / PLATFORMS
- BRIDGE SUPPORT
- BIRDCAGE SCAFFOLD
- RAMPS
- STAIRCASES
- FILM SETS
- PEDESTRIAN BRIDGES
- SPECIAL SCAFFOLDS

KWIKSTAGE AS SCAFFOLDING AND SUPPORT

Adjustable Base Jack

The adjustable base jack is used to accommodate variations in ground levels. Total adjustment is 600 mm, (this is slightly in excess of the spacing of 'V' pressings on the standard).

Kwikstage Standard

Standards form the vertical support and are made from high yield scaffold tube with clusters of four "V" pressings welded on at 500 mm intervals for attaching ledgers.

Ledgers

Ledgers tie standards longitudinally and transversely and are manufactured from 48.3mm tube.

Steel Hook On Planks

Non skid durable surface. Non tilt end to allow interlocking and hook on to ledgers to form a working platform.

Connector

Used for vertical connection of standards. For captive restraint use toggle pin.

Double Headed Jack

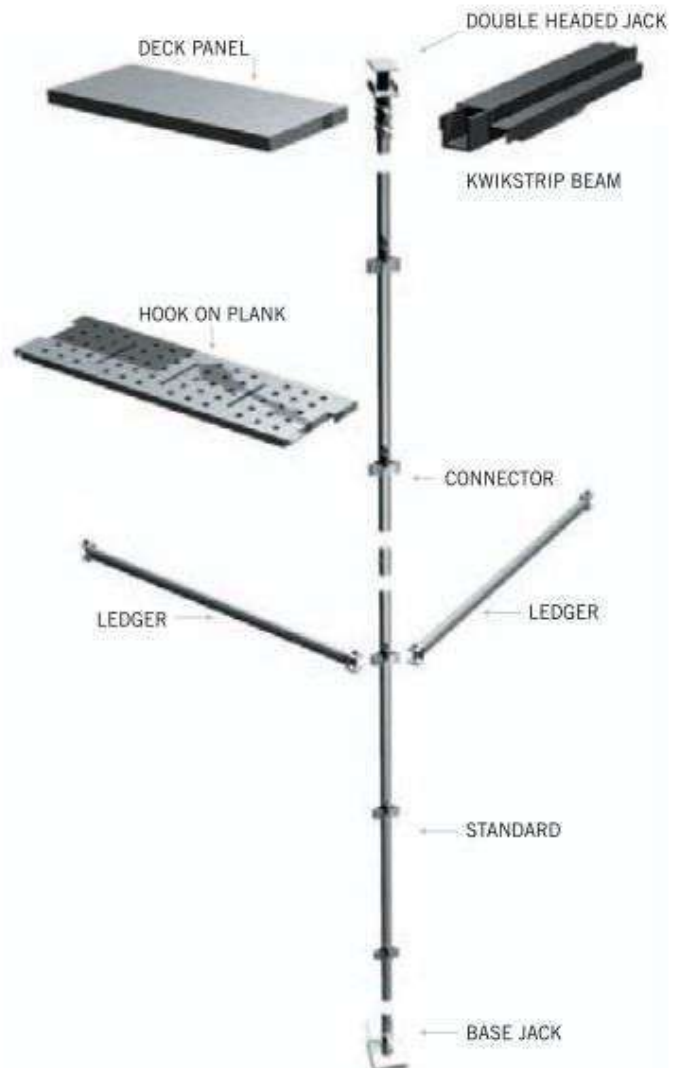
This jack achieves the objective of allowing the formwork components to be removed while leaving the support in place.

Kwikstrip Beam

This is used in conjunction with the double headed jack to support the slab formwork.

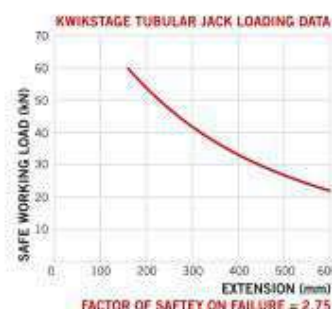
Deck Panel

The deck panel rests on the kwikstrip beam creating the formwork for a flat soffit.



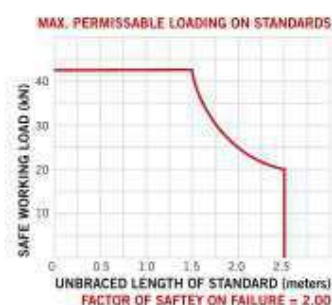
BASE PLATE AND JACKS

Code	Description	Mass
B/PLATE	Base Plate	0.94
JACKS/B	Base Jack	6.31
JACKS/D	D Head Jack	5.35
JACKS/J	J Head Jack	6.31
JACKS/U	U Head Jack	5.65
JACKS/P	Plain Jack	3.56



KWIKSTAGE STANDARDS

Code	Description	Length	Mass
KSS0500	Kwikstage Standard	500	2.46
KSS1000	Kwikstage Standard	1000	4.92
KSS1500	Kwikstage Standard	1500	7.38
KSS2000	Kwikstage Standard	2000	9.84
KSS2500	Kwikstage Standard	2500	12.30
KSS3000	Kwikstage Standard	3000	14.76



KWIKSTAGE LEDGERS

Code	Description	Size	Mass	Length
KSL0600	Kwikstage Ledger	600	2.35	552
KSL0900	Kwikstage Ledger	900	3.23	852
KSL1000	Kwikstage Ledger	1000	3.53	952
KSL1220	Kwikstage Ledger	1219	4.17	1171
KSL1295	Kwikstage Ledger	1294	4.39	1246
KSL1500	Kwikstage Ledger	1500	5.00	1452
KSL2000	Kwikstage Ledger	2000	6.44	1952
KSL2500	Kwikstage Ledger	2500	7.91	2452



KWIKSTAGE STEEL BOARDS

Code	Description	Width	Depth	Length	Mass
SSB2500	Kwikstage Steel Board	228	65	2500	18
SSB2000	Kwikstage Steel Board	228	65	2000	14
SSB1500	Kwikstage Steel Board	228	65	1500	11
SSB1295	Kwikstage Steel Board	228	65	1295	9
SSB900	Kwikstage Steel Board	228	65	900	6.5

NOTE: 48mm must be added to actual length of ledger to give description i.e. Upright centre to centre



KWIKSTRIP BEAMS

Code	Description	Mass
KSB0900	Kwikstrip beam 900	7.90
KSB1000	Kwikstrip beam 1000	8.87
KSB1220	Kwikstrip beam 1220	15.12
KSB1500	Kwikstrip beam 1500	19.63
KSB2000	Kwikstrip beam 2000	22.57
KSB2500	Kwikstrip beam 2500	27.52



TELESCOPIC BEAMS

Code	Description	Mass
KSBEX11	Extension beam inner 1	8.41
KSBEX10	Extension beam outer 1	
KSBEX21	Extension beam inner 2	9.69
KSBEX20	Extension beam outer 2	



FOLDED SECTION

Code	Description	Mass
KSB900F	Folded section 900	4.61



CANTILEVER BRACKETS

Code	Description	Mass
KSC0450	450 Cantilever bracket	7.31
KSC0900	900 Cantilever bracket	9.77



DOUBLE HEADED JACK

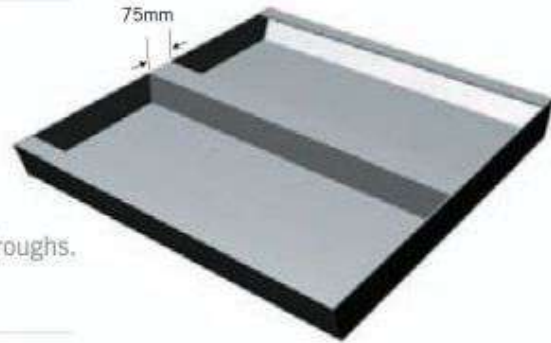
Code	Description	Mass
JACKS/D	Double headed jack	7.71

DECK PANELS

These are used to form soffits of concrete slabs.

USER POINTS

- Deck panels are precision manufactured.
- Deck panels are manufactured to work in conjunction with Coffers and Troughs.
- Off shutter finishes will only be obtained with new equipment.

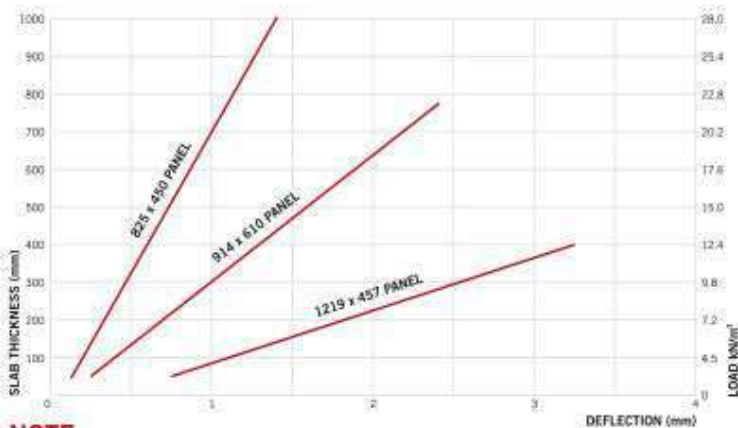


DECK PANELS

Code	Description	Mass
D082515	825 x 150 Deck panel	4.30
D082530	825 x 300 Deck panel	7.20
D082545	825 x 450 Deck panel	12.30
D091415	914 x 152 Deck panel	5.62
D091422	914 x 229 Deck panel	7.45
D091430	914 x 305 Deck panel	9.31
D091445	914 x 457 Deck panel	16.15
D091461	914 x 610 Deck panel	19.88
D121915	1219 x 153 Deck panel	7.40
D121922	1219 x 229 Deck panel	9.79
D121930	1219 x 305 Deck panel	12.18
D121945	1219 x 457 Deck panel	21.01



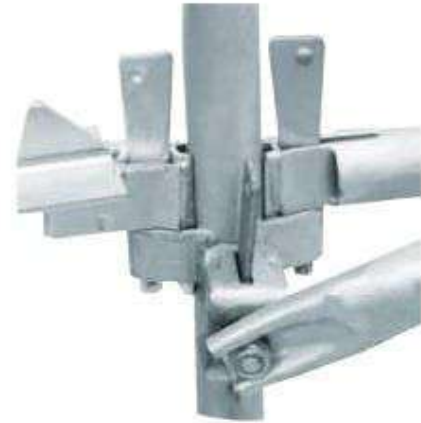
D0825F1	825 x 250 Deck filler	3.91
D0914F1	914 x 203 Deck filler	4.49
D1219F1	1219 x 203 Deck filler	5.98



NOTE

Loadings are based on 2.5mm faceplate and 2.5mm folded channel stiffener.





Standard(Vertical)立杆
Steel tubes 48.3 x 4.0mm

Code	Length		Weight
EK-KSS001	0.5M	1'7.5"	2.9kg
EK-KSS002	1.0M	3'3"	6.1kg
EK-KSS003	1.5M	4'10.5"	8.3kg
EK-KSS004	2.0M	6'6"	11.5kg
EK-KSS005	2.5M	8'1.5"	14.2kg
EK-KSS006	3.0M	9'9"	17.0kg



Ledge(Horizontal)钢管横杆
Steel tubes 48.3 x 3.2mm

Code	Length		Weight
EK-KSL001	1.2M	4'2"	12.3kg
EK-KSL002	1.8M	6'	15.4kg
EK-KSL003	2.4M	8'	20.2kg



Transoms(Horizontal)角钢横杆
Steel tubes 48.3 x 3.2mm

Code	Length		Weight
EK-KST001	1.2M	4'2"	12.3kg
EK-KST002	1.8M	6'	15.4kg
EK-KST003	2.4M	8'	20.2kg



Brace(diagonal)斜拉杆
Steel tubes48.3×2.5mm

Code	Length		Weight
	M	ft	
EK-KSB001	1.83M	6'	6.8kg
EK-KSB002	2.75M	9'	10.3kg
EK-KSB003	3.53M	11'6"	12.2kg
EK-KSB004	3.66M	12'	12.8kg



Edge Banding(Tie Bars)挡板
Steel tubes40×40mm

Code	Length		Weight
	M	ft	
EK-KSE001	1.2M	4'	3.8kg
EK-KSE002	1.8M	6'	5.4kg
EK-KSE003	2.4M	8'	7.2kg



Steel Plank踏板

Code	Length		Weight
	M	ft	
EK-KSSP001	0.76M	2'6"	6.0kg
EK-KSSP002	1.20M	4'	9.0kg
EK-KSSP003	1.80M	6'	13.4kg
EK-KSSP004	2.40M	8'	17.0kg



Tie Board挡板

Code	Weight
EK-KSTB001	1.2kg



Bracket三脚架

Code	Weight
EK-KSBR001	5.7kg
EK-KSBR002	8.3kg



Toe Board Bracket 杯卡

Code	Weight
EK-KSCW001	0.8kg



Board holder支架

Code	Weight
EK-KSBH001	2.85kg

碗型系列脚手架 Cup Lock Scaffolding

脚手架
系统
Scaffolding



装配图
assemble process pictures

Standard(Vertical)立杆
Steel tubes 48.3 × 3.2mm

Code	Length		Weight
	M	ft	
EK-CLS001	0.5M	1'8"	3.42kg
EK-CLS002	1.0M	3'3"	6.12kg
EK-CLS003	1.5M	4'11"	8.77kg
EK-CLS004	2.0M	6'6"	11.46kg
EK-CLS005	2.5M	8'2"	14.13kg
EK-CLS006	3.0M	9'10"	16.82kg



Ledge(Horizontal)横杆
Steel tubes 48.3 × 3.0mm

Code	Length		Weight
	M	ft	
EK-CLL001	0.6M	2'	2.39kg
EK-CLL002	1.0M	3'3"	3.80kg
EK-CLL003	1.5M	4'11"	5.55kg
EK-CLL004	2.0M	6'6"	7.34kg
EK-CLL005	2.5M	8'2"	9.06kg



Brace Diagonal斜拉杆
Steel tubes 48.3 × 3.2mm

Code	Length	Weight
EK-CLB001	1.5 × 1.8M	8.00kg
EK-CLB002	1.8 × 2.0M	9.03kg
EK-CLB003	1.5 × 2.5M	9.69kg
EK-CLB004	2.0 × 2.5M	10.53kg
EK-CLB005	2.0 × 3.0M	11.73kg



Intermediate Transom 横梁
Steel tubes 48.3 x 3.0mm

Code	Length	Weight
EK-CLT001	0.56M	3.71kg
EK-CLT002	0.80M	4.53kg
EK-CLT003	1.30M	6.28kg
EK-CLT004	1.80M	8.04kg



Tube Bracket 钢管三角架

Code	Length	Weight
EK-CLTB001	0.29M	1.45kg
EK-CLTB002	0.56M	6.39kg
EK-CLTB003	0.79M	7.64kg



Angle Bracket 角钢三角架

Code	Length	Weight
EK-CLAB001	0.29M	2.05kg
EK-CLAB002	0.56M	7.60kg
EK-CLAB003	0.79M	9.40kg



Strengthen Transom 加强横梁

Code	Length	Weight
EK-CLST001	0.80M	4.82kg
EK-CLST002	1.30M	7.76kg
EK-CLST003	1.80M	10.71kg



圆盘系列脚手架 Ring Lock Scaffolding

脚手架
系统
Scaffolding



Standard(Vertical)立杆
Steel tubes 48.3 × 3.2mm

Code	Length		Weight
EK-RLS001	0.5M	1'8"	3.80kg
EK-RLS002	1.0M	3'3"	5.50kg
EK-RLS003	1.5M	4'11"	7.83kg
EK-RLS004	2.0M	6'7"	10.14kg
EK-RLS005	2.5M	8'2"	12.48kg
EK-RLS006	3.0M	9'10"	14.83kg



Ledge(Horizontal)横杆
Steel tubes 48.3 × 3.0mm

Code	Length		Weight
EK-RLS001	0.65M	2'2"	3.05kg
EK-RLS002	1.07M	3'6"	4.54kg
EK-RLS003	1.57M	5'2"	6.28kg
EK-RLS004	2.13M	7'	8.24kg
EK-RLS005	2.44M	8'	9.32kg
EK-RLS006	3.05M	10'	11.48kg



Strengthen Ledge加强横杆
Steel tubes 48.3 × 3.0mm

Code	Length		Weight
EK-RLSL001	2.13M	7'	15.62kg
EK-RLSL002	3.05M	10'	23.28kg
EK-RLSL003	4.26M	13'11"	30.86kg
EK-RLSL004	5.17M	17'	37.10kg



Guard护栏

Code	Length		Weight
EK-RLG001	2.5M	8'2"	11.10kg
EK-RLG002	3.0M	9'10"	14.50kg



EK-RLBC
起始套
Base Collar
240mm 1.6kg



EK-RLC
连接板
Connector
500mm 3.40kg



EK-RLSU
加强型U型横杆
Strengthened U Ldeger
1088/6.0kg 1400/7.9kg



EK-RLTB-1
三角架
Bracket
1088mm 14.1kg



EK-RLTB-2
三角架
Bracket (With Single Coupler)
400mm 3.4kg



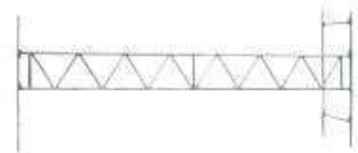
EK-RLTB-3
三角架
Bracket
732mm 6.23kg



EK-RLTB-4
三角架
Bracket
400mm 4kg



EK-RLTB-5
三角架
Bracket
732mm 5.85kg



EK-RLDT
横梁
Double transom
48.3X3.2mm

HK-系列脚手架
HK- Scaffolding

脚手架
系统
Scaffolding



Vertical立杆
Steel tubes 48.3 × 3.00mm

Code	Length		Weight
EK-HKS001	1.0M	3'3"	6.8kg
EK-HKS002	1.5M	4'11"	9.4kg
EK-HKS003	2.0M	6'7"	12.1kg
EK-HKS004	3.0M	9'10"	17.5kg



Double Guardrail 双管护栏横梁
Steel tubes 34 × 3.0mm

Code	Length	Weight
EK-HKDG001	0.70M	6.80kg
EK-HKDG002	1.05M	7.40kg
EK-HKDG003	2.50M	13.0kg



Diagonal Brace 斜拉杆
Steel tubes 48.3 × 2.5mm

Code	Length	Weight
EK-HKDB001	1.65M	7.50kg
EK-HKDB002	2.50M	10.8kg
EK-HKDB003	3.05M	12.5kg



Ledge Beam 双管横梁
Steel tubes 34 × 3.0mm

Code	Length	Weight
EK-HKL001	1.05M	7.0kg
EK-HKL002	1.65M	10.0kg
EK-HKL003	2.50M	14.5kg

铝合金系列脚手架
Aluminium Scaffolding



铝合金
系列
Aluminium
Scaffolding



EK-A001	EK-A002	EK-A003
立柱 (mm)	横杆 (mm)	U型横杆 (mm)
Aluminium Alloy Ring Lock Scaffolding Vertical	Aluminium Alloy Ring Lock Scaffolding Ledger	Aluminium Alloy Ring Lock Scaffolding U Ledger
500 1000 1500 2000 2500 3000 4000	732 1088 1400 1572 2072 2572 3072	732 1088 1400
48.3X4 122X10mm	48.3X4mm	



EK-A004	EK-A005	EK-A006
U型加强横杆 (mm)	斜拉杆 (mm)	门式脚踏板
Aluminium Alloy Ring Lock Scaffolding U strengthened Ledger	Aluminium Alloy Ring Lock Scaffolding Diagonal	Aluminium Alloy Scaffold Plank Trapdoor
1572 2072 2572 3072	1400X2000 1572X2000 2072X2000	2572 3072 (mm)
	48.3X2.5mm	(600X78mm)



EK-A007	EK-A008	EK-A009
铝合金脚踏板	铝合金脚踏板	铝合金楼梯 (mm)
Aluminium Alloy Scaffold Plank	Aluminium Alloy Scaffold Plank	Aluminium Ladder
1572,2072,2572,3072 (mm)	1572,2072,2572,3072 (mm)	2570/3070
(320X90X3mm)	(600X78mm)	



GONGSI
GROUP

踏板
Plank
Scaffolding



EK-B001
门式脚踏板
Scaffold Plank
1800mm 24.8kg (495X50mm)

EK-B002
美式冲压钩脚踏板
American Type
1219,1524,2133,2438,2743 (mm)
(225X65X1.8mm)

EK-B003
美式冲压钩脚踏板
American Type
1219,1524,2133,2438,2743 (mm)
(225X65X1.8mm)



EK-B004
轻型脚踏板
Light Duty Type
1000,1500,2000,2500,3000,4000 (mm)
(240X45X1.2mm)

EK-B005
轻型脚踏板
Light Duty Scaffold Plank
1000,1500,2000,2500,3000,4000 (mm)
(210X45X1.2mm 250X50X1.1mm)

EK-B006
锻压钩式脚踏板
Scaffold Plank
1572,2072,2572,3072 (mm)
(32X76X1.5mm)



EK-B007
冲压钩式脚踏板
Scaffold Plank
1572, 2072, 2572, 3072 (mm)
(320X76X1.5mm)

EK-B008
奥式脚踏板
Scaffold Plank
735,1250,1810,2420,3075 (mm)
(225X65X1.8mm)

EK-B009
门式脚踏板
Scaffold Plank
1572,2072,2572,3072 (mm)
(610X62mm)



EK-B010
脚踏板
Scaffold Plank
1572,2072,2572,3072 (mm) (320X76X1.5mm)

EK-B011
脚踏板
Scaffold Plank
739,1065,1500,2000,2500,3000 (mm)
(315X76X1.8mm)

EK-B012
木横梁
Scaffold Plank
1572,202,2572,3072 (mm)



EK-B013	EK-B014	EK-B015
欧式脚踏板	脚踏板	澳式脚踏板
Scaffold Plank	Scaffold Plank	Scaffold Plank
650 950 2090 2525 (mm) (290X75X1.8mm)	1500 1800 2100 2400 (mm) (287X57X1.5mm)	735 1250 1810 2420 3075 (mm) (225X65X1.5mm)



EK-FI001	EK-FI002	EK-FI003
直角墙锁杆	弯钩墙锁杆	弯钩墙锁杆
Tubular Anchorage	Tubular Anchorage With Hook	Tubular Anchorage With Hook
0.5m 48.3X2.5mm	300,450,1300,1500,1900 (mm) 48.3X2.5mm	48.3*3.25mm 708/2.92kg



EK-FI004	EK-FI005	EK-FI006
弯钩墙锁杆	吊环	吊环
Tubular Anchorage With Hook	Eye Bolt (mm)	Eye Bolt (mm)
48.3*3.25mm 835/3.5kg	0.52kg,0.50kg,0.48kg	90,125,165,195,225,300,400,455



EK-FI007	EK-FI008	EK-FI009
夹管器	管式底座	U型头
Pipe Clamp Fitting	Base Plate	U Head
400,600,1000,1200 (mm)	125X125X5mm 0.85kg	136X138mm 1.24kg



可调丝杆
Screw
Jack



EK-SJ001
旋转调节底座
Swivel Adjustable Screw Jack Base
600 914mm 35/38mm 150X150X8mm



EK-SJ002
调节底座
Jack Base
450mm 32mm 150X150X5mm



EK-SJ003
U型调节底座
U Head Screw Jack
520mm 32mm 150X200mm



EK-SJ004
空心调节底座
Hollow Screw Jack Base
600,914,1524mm 300 400 600 800mm
38X4mm 150X150X5mm



EK-SJ005
空心调节底座
Hollow Screw Jack Base
1000mm 48X5mm 200X200X9.5mm



EK-SJ006
U型调节底座
U Head Screw Jack
700mm 35/38X4mm 170X84mm



EK-SJ007
U型调节底座
U Head Screw Jack
700mm 48X4mm 170X84mm



EK-SJ008
空心调节底座
Hollow Screw Jack Base
600,914,1524mm 143X143X5/6mm



EK-SJ009
调节底座
Solid Screw Jack Base
600,914,1524mm 35/38mm



EK-SJ010
管式调节底座
Socket Screw Jack
600,914,1524mm 35/38mm



EK-SJ011
U型调节底座
U Head Screw Jack
600,914,1524mm 100X150mm



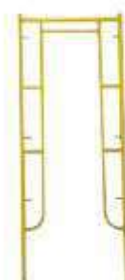
EK-SJ012
调节器
Extension Base Plate
125X125X381/762mm
250X250X381/762mm



EK-F001
Walk Through Frame
LXH
5'X6'-4" 5'X6'-7" Dia 42X2.3mm



EK-F002
Walk Through Frame
LXH
3'X6'-8" 3'X8'-8" 3'X10'-8" 3'X11'-8"
Dia 42X2.3mm



EK-F003
Walk Through Frame
LXH
3'X4'-1' 2'X6'-7" 3'X5'-1" 3'X6'-7"
42'X6'-7" Dia 42X2.3mm



EK-F004
Box Frame
LXH
5'X3'-1" 5'X4'-1" 5'X5'-1" 5'X6'-1" 3'X4"
Dia 42X2.3mm



EK-F005
Box Frame
LXH
2-5'X3'-1" 2-5'X5'-1" 3'X2'-1" 3'X3'-1"
3'X5'-1" 3'X6'-4" 3'X6'-7" Dia 42X2.3mm



EK-F006
Box Frame
LXH
457X2032mm 457x3251mm
Dia 42X2.3mm



EK-F007
Folding Trestle
3' 4' 6'
Dia 32X2mm



EK-F008
斜拉杆
axb 5'x4" 7'x2" 7'x4" 10'x2" 10'x4"
axb 7'x3'/'4" 10'x3'/'4"
axb 5'x4" 7'x4" 10'x4"



EK-F009
单拉杆
3' 5' 7' 10'



EK-F010
单拉杆
L
3' 5' 7' 10'



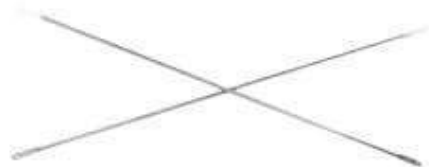
EK-F011
重型门架
Heavy Duty Frame
1500x1200mm
Dia 57x2.5mm



EK-F012
重型门架
Heavy Duty Frame
1200x920mm
Dia 57x2.5mm



门架类
Frame
System



EK-F013
斜拉杆axb (mm)
Cross Brace
700X1220/3.1kg 1300X1220/4.9kg 1575X1220/5.0kg
1800X1220/5.9kg 2100X1220/7.0kg 2400X1220/8.0kg
3000X1220/9.0kg



欧式门架
Frame Scaffold



EK-F014
欧式门架
Frame Scaffold
2000X732mm 20kg



EK-F015
欧式门架
Frame Scaffold
732/1.76kg 1088/2.58kg 1572/3.5kg 2072/4.52kg
2572/5.53kg 3072/6.55kg Dia 34X3.25mm



EK-F016
欧式门架
Frame Scaffold
2572X2000/8.34kg 3072X2000/9.27kg Dia 42X2.3mm



EK-F017
欧式门架
Frame Scaffold
732/4.38kg Dia 27X2mm



欧式门架
European Frame



EK-F018
欧式门架
European Frame
2000X739mm Dia 48.3X3.25mm



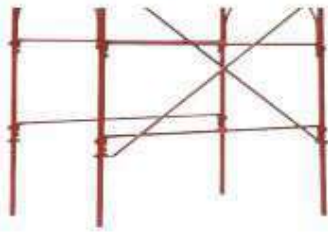
EK-F019
铝合金
Aluminium Alloy
2000X739mm Dia 48.3X4mm



EK-F020
门架护栏
Frame Guard Rail(mm)
1500 2000 2500 3000
(Dia 34X2.5mm)



EK-F021
斜拉杆
Cross Brace(mm)
2500 2828.5 3202 3605
(Dia 48.3X2.5mm)



EK-F022

意式门架

ItalyType Frame

2000X1048mm Dia 48.3X2.5mm



EK-F023

门架护栏

Guard Rail

1725 2020mm Dia 27X2.3mm



EK-F024

门架

Frame

1360X1000mm Dia 48.3X2.65mm



EK-F025

门架

Frame

2000X1000mm Dia 48.3X2.65mm



EK-F026

斜拉杆

Cross Brace

750X1000 1250X1550 1750X2000

2250X2500 Dia 38X2.65mm



EK-F027

移动折叠门架

Mobile Frame

1170X1055mm 26kg



模板类
Formwork



EK-FW001
500-800 1070-1820 1600-2900 1750-3120 1982-3352
2000-3500 2290-3550 2590-3950 2600-4720 3200-4870
Dia 57X1.8~2.5mm Dia 48X1.8~2.5mm Dia 48X1.8~2mm
Dia 42/40X1.8~2mm 120X120X4/5/6mm



EK-FW002
1062-1892 1772-3124 1982-3352 2000-3500 2400-3900
2602-3962 3200-4870 3394-5068 Dia 57X2.5mm
Dia 48X2.5mm 120X120X5/6mm



EK-FW003
1764-3000 2014-3500 2264-4000
Dia 57X2.5mm Dia 48X3.5mm 120X120X8mm
100X150mm



EK-FW004
1076-1827 1626-2517 1986-3347
2596-3957 3454-5067
Dia 60X3.6mm Dia 48X4.0mm 150X150X9mm



EK-FW005
1740-3000 2090-3500
Dia 60X2.5mm
Dia 48X3.5mm 150X150X6mm



EK-FW006
1760-2900 2200-3900 2700-4900
Dia 70X3mm
Dia 60X4.0mm 152X152X9.5mm



EK-FW007
玛钢夹紧器
Malleable Iron Wedge Clamp
8-10mm 0.47kg



EK-FW008
冲压式夹紧器
Pressurized Wedge Clamp
8-10mm 0.46kg



EK-FW009
冲压式夹紧器
Pressurized Wedge Clamp
8-10mm 0.40kg



EK-FW010
夹紧器
Tensor Clamp
8-10mm 3.8kg



EK-FW011
快速接头
Fast Joint
Dia 63/74/79.5mm



EK-FW012
紧线器
Thread Tightening Clamp
1.4kg



EK-FW013
夹紧器螺母
Wing Nut
0.58kg/Dia70mm 17



EK-FW014
夹紧器螺母
Wing Nut
0.30KG 17



EK-FW015
夹紧器螺母
Wing Nut
0.29kg 17



EK-FW016
夹紧器螺母
Wing Nut
0.41KG 17



EK-FW017
夹紧器螺杆
Tie Rod 17mm
1000,1500,2000,2500,3000,4000,6000mm



EK-FW018
热轧夹紧器螺杆
Tie Rod
1000, 1500, 2000, 2500, 3000, 4000, 6000mm



EK-FW019
夹紧器螺母
Wing Nut
0.72KG/Dia 110mm 17



EK-FW020
夹紧器螺母
Wing Nut
0.41KG/ Dia70mm 17



EK-FW021
锻压夹紧器螺母
Forged Wing Nut
0.95kg/ Dia110mm 17



EK-FW022
锻压夹紧器螺母
Forged Wing Nut
0.58kg/ Dia70mm 17



EK-FW023
加强型夹紧器螺母
Reinforced Type Anchor Nut
0.8kg/ Dia110mm 1.2kg/ Dia130mm 17



EK-FW024
夹紧器螺母
Tie Rod Nut
0.43kg 0.19kg 17



EK-FW025
夹紧器双头连接螺母
Water Stopper
0.56kg 17



EK-FW026
夹紧器螺母
Wing Nut
0.62kg/Dia100mm 17



EK-FW027
冲压底盘
Washer Plate
120X120X6mm/0.62kg
120X120X8/0.72kg



EK-FW028
冲压底盘
Washer Plate
120X120X6mm/0.62kg
120X120X8/0.72kg



EK-FW029
锻压圆底座
Forged Anchor Plate
17mm/1.43kg



EK-FW030
锻压方底座
Forged Anchor Plate
17mm/2.78kg



EK-FW031
锻压底座
Forged Anchor Plate
17mm/100X150mm/1.25kg



EK-FW032
冲压底座
Punched Anchor Plate
17mm/150X200X10mm/2.52kg



EK-FW033
方柱模板
Steel Panel
500X500mm/8045kgX4



EK-FW034
三角架
Tripod
Dia40-80mm/10kg
30X30X1.5mm



EK-FW035
三角架
Tripod
Dia40-80mm
11kg 32X2.5mm



EK-FW036
三角架
Tripod
Dia40-80mm
9.00kg 30X30X2mm



EK-FW037
三角架
Tripod
Dia40-80mm
7.65kg 25X2mm



EK-FW038
角头
Clamping Corner
5.9kg



EK-FW039
可调节头
Adjustable Splice
4.4kg



EK-FW040
可调节头
Adjustable Splice
2.82KG



EK-FW041
可调节头
Adjustable Splice
6.2KG



EK-FW042
模板夹
Panel Clamp
1.90kg



EK-FW043
模板夹
Panel Clamp
4.32kg



EK-FW044
模板夹
Panel Clamp
3.9kg



EK-FW045
模板夹
Panel Clamp
4.7kg



EK-FW046
模板夹
Panel Clamp
4.75kg



EK-FW047
推拉支撑
Push-Pull Shore
17.5kg 1600-1700mm



EK-FW048
推拉支撑
Push-Pull Shore
25KG 1550-3000mm



EK-FW049
楼梯步模板
Steel Stair Panel
165mm/5kg 180mm/5.3kg



EK-FW050
固定台
Table Head
44X25X30cm/19kg



配件类
Accessories



EK-E013
弯管内接
Coupling Pin
2.4kg Dia 38X4mm



EK-E014
内接
Connector
0.5kg 40X40X3X140mm



EK-E015
内接
Connector
0.6kg Dia40X3X204mm



EK-E016
丝杠把手
Jack Nut
0.4kg Dia35/38mm



EK-E017
丝杠把手
Jack Nut
0.8kg Dia35/38mm



EK-E018
丝杠把手
Jack Nut
0.66kg Dia38mm



EK-E019
锻压丝杠把手
Forged Jack Nut
0.87kg 35/38mm



EK-E020
锻压丝杠把手
Forged Jack Nut
0.93kg 48/50mm



EK-E021
丝杠把手
Jack Nut
0.44kg Dia 38/40mm



EK-E022
丝杠把手
Jack Nut
0.58kg Dia 38/40mm



EK-E023
销子
Lock Pin
0.12KG Dia 20X48mm



EK-E024
销子
Lock Pin
0.11kg Dia 19X48mm



EK-E025
销子
Lock Pin
0.085kg Dia 18X46mm



EK-E026
销子
Lock Pin
0.05kg Dia 12.7X55mm



EK-E027
销子
Lock Pin
0.05kg Dia 12.7X55mm



EK-E028
销子
Lock Pin
Dia 9X67mm 0.045kg
Dia 9X90mm 0.55kg



EK-E029	EK-E030	EK-E031	EK-E032
销子	销子	销子	歪头销子
Snap Pin	Lock Pin	Roll Pin	Lock Pin
0.055kg Dia 9.5X72.5mm	0.035kg 0.045kg Dia 1X40 12X50mm	0.02kg Dia 11.2X46mm	Dia 19X162mm



EK-E033	EK-E034	EK-E035	EK-E036
销子	弹簧片	弹簧片	工具箱
Lock Pin	Spring Rivet	Spring Rivet	Safety Tool Box
0.5kg	0.025kg	0.015kg	2mm/95kg 3mm/125kg



EK-E037	EK-E038	EK-E039	EK-E040
蚯蚓销	蚯蚓销	蚯蚓销	速锁
Gravilty Pin	Gravilty Pin	Gravilty Pin	Fast Lock
Dia 9X42mm 0.10g	Dia 8/10/12X48.3mm	Dia 12X56mm 0.21kg	0.185kg



EK-E041	EK-E042	EK-E043	EK-E044
保护网	圆盘	圆盘	圆盘
Safety Net	Round Ring	Round Ring	Round Ring
120/240(g/m2)	0.48kg/122X9.5mm	0.44kg	0.48KG/128X8mm



GONGSI

配件类
Accessories



EK-E045
圆盘
Round Ring
0.44kg/122X9.5mm
0.54kg/134X9.5mm



EK-E046
圆盘
Round Ring
0.47KG/134X8mm



EK-E047
铝合金圆盘
Round Ring Aluminium Round Ring
0.17kg/123X10mm



EK-E048
锻压上碗
Forged Top Cup
0.61kg



EK-E049
下碗
Bottom Cup
0.21kg



EK-E050
锻压紧缩片
Forged Ledge Blade
0.28kg



EK-E051
钢铸插头
Casting-Steel Ledger End
0.55kg



EK-E052
钢铸插头
Casting-Steel Ledger End
0.52kg



EK-E053
钢铸插头
Casting-Steel Ledger End
0.49kg



EK-E054
钢铸插头
Casting-Steel Ledger End
0.67KG



EK-E055
左右插头
Diagonal Brave End
0.7kg



EK-E056
左右插头
Diagonal Brave End
0.66kg



EK-E057
连体铸钢头
Twin Wedge
1.16kg



EK-E058
单刹胶轮
Swivel Caster Wheel With Break
5.50kg



EK-E059
胶轮
Caster Wheel
4.25kg



EK-E060
旋转锁
Twist Lock
1.4kg



EK-E061	EK-E062	EK-E063
吊钩	1T吊轮	木踏板头
Lifting Hook	Gin Wheel	Wood Board End
5T 3.3kg 3T 1.7kg 1.5T 0.58kg 0.75T 0.25kg	4.8kg	0.63kg



EK-E067	EK-E073	EK-E074
冲压韩式横杆头	吊环	吊环
Korean Type Punched Ledge End	Traction Ring	Traction Ring
0.32kg	0.49KG	0.22KG



EK-E070	EK-E072	EK-E079
铝合金钩	吊环	底座
Aluminium Alloy Hook	Traction Ring	Base Plate
50mm/0.47kg	0.96kg	2.00KG 150X150X10mm



EK-E076	EK-E077	EK-E078
螺栓	螺母	底座
Bolt	Nut	Base Plate
1/2 9/16 5/8 M14	1/2 9/16 5/8 M14 对边 19 21 22 23 24	3.05kg 150X150X10mm



EK-F001
瑞典式管子钳
Swedish Type Pipe Wrench
1/2" 1" 1.5" 2" 3"



EK-F002
管子钳
Pipe Wrench
1" 1.5" 2" 3" 4"



EK-F003
双直柄管子钳
Double-Vertical Handles Pipe Wrench
1/2" 3/4" 1" 1.5" 2" 3" 4"



EK-F004
S型管子钳
"S" Type Pipe Wrench
1" 1.5" 2"



EK-F005
建筑用锤
Hammer
0.66kg



EK-F006
18"起钉器
I Beam Bar 18"
0.76kg



EK-F007
曲柄棘轮扳手
Bended Handle Raychet Wrench
17/21mm 19/22mm 19/24mm 21/24mm



EK-F008
直柄棘轮扳手
Vertical Handle Raychet Wrench
17/21mm 19/22mm 19/24mm 21/24mm



EK-F009
扣件单头扳手
Single-Ended Wrench
21mm 22mm 23mm 24mm



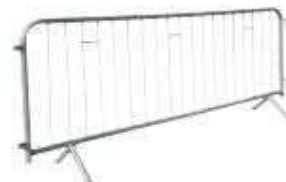
EK-F010
扣件单头扳手
Single-Ended Wrench
21mm 22mm 23mm 24mm



EK-G001	EK-G002	EK-G003	EK-G004
焊接叉子	焊接叉子	焊接叉子	焊接叉子
4 Way U Heads	4 Way U Heads	4 Way U Heads	4 Way U Heads
2.65kg	2.93kg	2.40kg	2.23kg



EK-G005	EK-G007	EK-G009	EK-G068
焊接叉子	烟斗销	C型夹子	连接器
4 Way U Heads	Scaffold Hook	Head Clip	Connector With Couplers
2.30kg	0.25kg	1.38kg	2.55kg



EK-G030	EK-G031	EK-G032	EK-G037
护栏	护栏	护栏	围栏
Wedge Type Guard Rail	Wedge Type Guard Rail	Beam Clamp	Protective Barrier
11.2kg	5.53kg	8.5kg	2500X1100 Dia 38X1.5mm 19kg 2200X1108 Dia 38X1.5mm 18.5kg



EK-G038	EK-G039	EK-G040	EK-G042
围栏	螺杆扶手	螺杆扶手	螺杆扶手
Protective Barrier	Screw Parapet	Screw Parapet	Screw Parapet
2490X1090 Dia 38X2mm 19.5kg 2350X1100 Dia 33.7X1.5mm 17kg	35X35X1.5mm 30X30X2mm 5.42kg	30X30X1.5mm 25X25X3mm 6.3kg	Dia 42X2.5mm Dia 35mm 12.5kg



GONGSI

相关产品
Relative
Products



EK-G045

护栏

Guard Rail

Dia 40X2mm 3.41kg



EK-G046

护栏

Guard Rail

Dia 25X3.5mm 1.42kg



EK-G047

护栏

Guard Rail

Dia 38X4mm 6.8kg



EK-G048

护栏

Guard Rail

Dia 42X3mm 3.78kg



EK-G049

螺杆连接

Coil Tie With Screw Bolt

300+300mm 1.18kg



EK-G050

防护支架

Trestle

800-1200mm 15.5kg



EK-G051

防护支架

Trestle

1000-1800mm 21kg

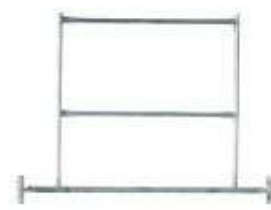


EK-G052

防护支架

Trestle

1100-1900mm 20.6kg



EK-G053

防护支架

Trestle

1600X998mm 11.50kg



EK-G054

梯子

Ladder

2030X376mm/15.5kg 2800X376mm/11.6kg

Dia 32X2mm



EK-G055

梯子

Ladder

2220X300mm/9kg 40X20X2mm 20X20X2mm



EK-G056

护栏杆

Guard Rail Post

42X2.3mm 3.2kg



相关产品
Relative
Products



EK-G057
三角架
Bracket
50X50X2mm 13.20kg

EK-G058
三角架
Bracket
11.00kg

EK-G059
三角架
Bracket
2.45kg



EK-G060
扣件墙锁杆
Wall Fixer
350/1.5kg 600/2kg 1100/2.8kg

EK-G061
折弯器
Bending Device
50X20X2mm 28X2.5mm 3.41kg

EK-G062
弯管器
Bending Device
12 , 15 , 22 1.22/2.20/3.95kg



EK-G063
墙托架
Parapet Clamp
23.5kg

EK-G064
蹬形架
Stirrups Bracket
26.5kg

EK-G065
移动支架
Mobile Bracket
13.5kg



EK-G066
挡板固定器
Toe Board Fixer
0.88kg

EK-G067
U形内接
U Type Joint Pin
1.56kg

EK-G068
镀锌管
Hot-dip-galvanized